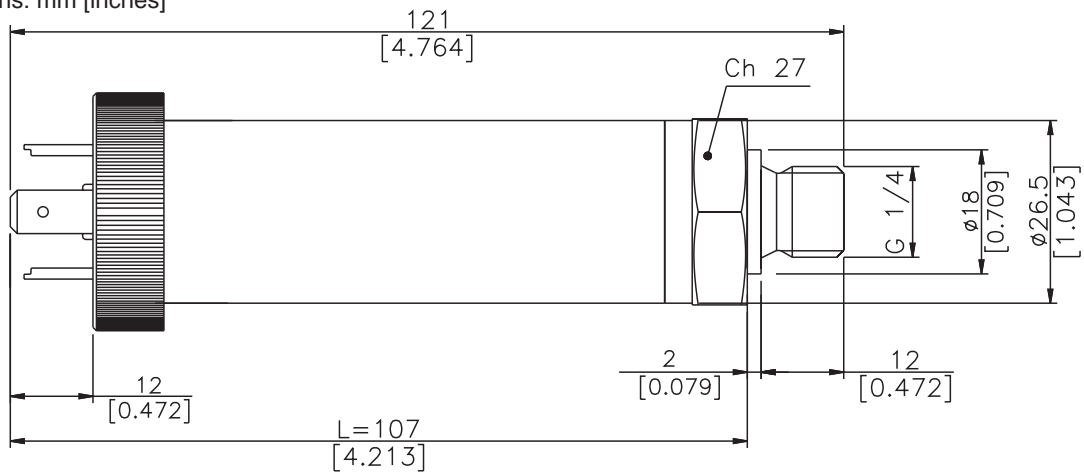


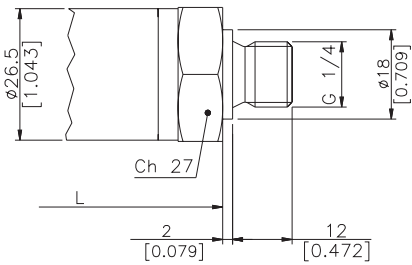
INSTALLATION DRAWINGS

Dimensions: mm [inches]

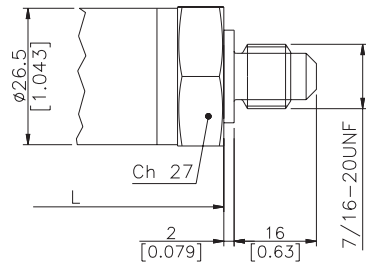


PRESSURE CONNECTION

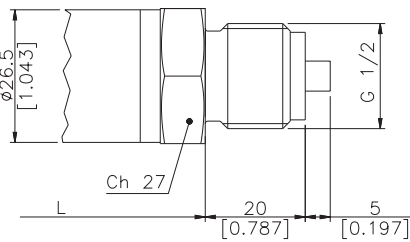
(1) G 1/4 MALE (DIN 3852-A)



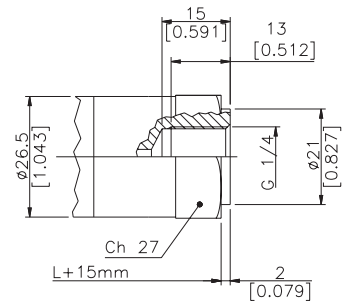
(2) SAE 04 AS4395-E



(3) G 1/2 A (DIN 16288)

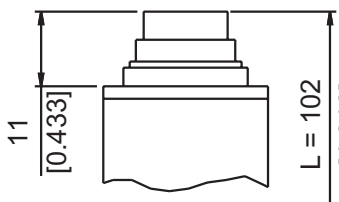


(4) G 1/4 FEMALE

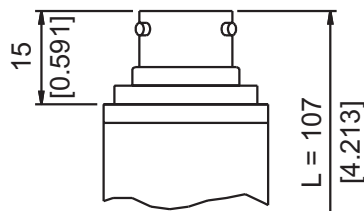


ELECTRICAL CONNECTION

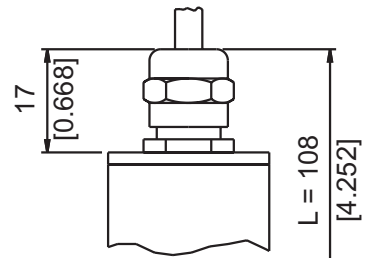
P - 7 pole connector



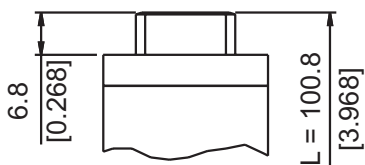
V - 6 pole connector



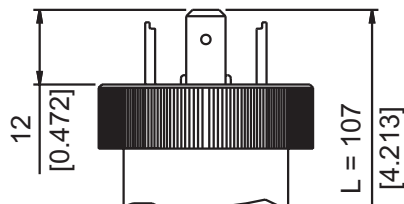
F - 2 pole cable



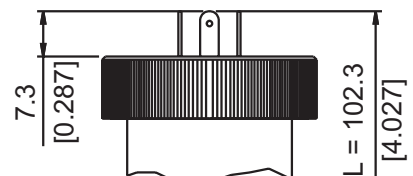
H - G4A1M
4 pole male connector



E - 4 pole connector
solenoid



M - 4 pole connector
microsolenoid



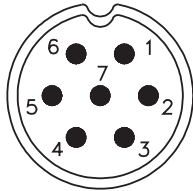
INTRINSIC SAFETY CHARACTERISTICS

		II 1G Ex ia IIC T6	II 1G Ex ia IIC T5
Maximum voltage	U _i	30Vdc	30Vdc
Maximum current	I _i	100mA	100mA
Maximum power	P _i	0.75W	0.75W
Maximum inductance (*)	L _i	0.25 mH	0.25 mH
Maximum capacity (*)	C _i	26nF	26nF
Temperature of the fluid		-20...+60°C	-20...+70°C
Ambient temperature		-20...+60°C	-20...+70°C

(*) includes inductance levels and capacity of a cable: (typical L 1μH/m and typical C 100 pF/m) with maximum length 15mt.

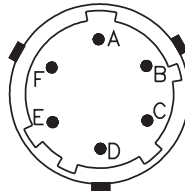
ELECTRICAL CONNECTION - Connectors

P - 7-pole connector



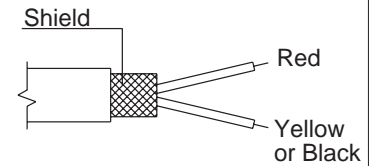
Male connector 09-127-09-07
Protection IP67

V - 6-pole connector



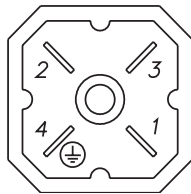
Male connector VPT02A10-6PT2
Protection IP66

F - 2 pole cable



Shielded cable 2x0.25 - 2m.
Protection IP65

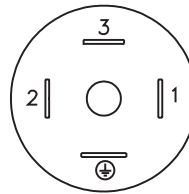
H - 4-pole connector



Male connector G4A1M
Protection IP65

E - 4 pole solenoid connector

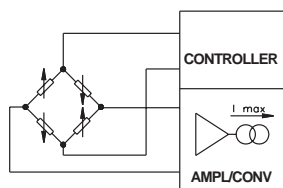
M - 4 pole microsolenoid connector



Solenoid DIN 43650A - ISO4400
Protection IP65
Microsolenoid DIN 43650C - ISO4400
Protection IP65

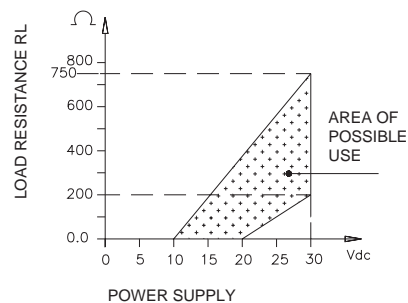
ELECTRICAL CONNECTION - Connection diagrams

CURRENT AMPLIFIED OUTPUT - mod. E



	cod. V	cod. P	cod. F	cod. E/M	cod. H
POWER SUPPLY +	A	3	Red	1	1
SIGNAL -	B	4	Yellow or Black	2	2
⊥	Case	Case	Shield	⊥	4

LOAD DIAGRAM (Current output)



ACCESSORIES ON REQUEST

Connectors Connection E 3 poles Connector + ground DIN43650A ISO4400 CON 006 Prot. IP65 Connection H 3 poles Connector + ground G4W1F Prot. IP65 CON 297	Connection M 3 poles Connector + ground DIN43650C ISO4400 CON 008 Prot. IP65 Connection P 7 poles female cable connector Prot. IP67 CON 321 Connection V 6 poles female cable connector Prot. IP66 CON 300
--	--

ORDERING INFORMATION

Pressure transmitter **XSA**

OUTPUT SIGNAL	
Standard	
4 .. 20 mA	E

PRESSURE CONNECTION	
Standard	
G 1/4 gas male	1
On request	
7/16-20UNF-2A male (SAE4 per AS4395-E)	2
G 1/2A (DIN 16288)	3
G 1/4 gas female	4

ELECTRICAL CONNECTIONS	
4-pole connector solenoid	E
Shielded cable	F
4 pole connector	H
4-pole connector microsolenoid	M
7 pole connector	P
6 pole connector	V

Mechanical and/or electrical characteristics differing from standard may be arranged on request.

TEMPERATURE CLASS	
5	T5 (-20...+70°C)
6	T6 (-20...+60°C)

RESPONSE TIME	
V	Fast (< 1msec)

ACCURACY	
T	± 0.15% FSO Typical

RANGE			
	bar		psi
BV25	0..0.25	P05U	0..05
BV50	0..0.5	P15U	0..15
B01U	0..1	P03D	0..30
B02U	0..2	P05D	0..50
B2V5	0..2.5	P75U	0..75
B04U	0..4	P01C	0..100
B05U	0..5	P15D	0..150
B06U	0..6	P25D	0..250
B07U	0..7	P03C	0..300
B01D	0..10	P05C	0..500
B16U	0..16	P75D	0..750
B02D	0..20	P01M	0..1000
B25U	0..25		
B03D	0..30		
B04D	0..40		
B05D	0..50		
B06D	0..60		

CALIBRATION STANDARDS
 Instruments manufactured by Gefran are calibrated against precision pressure calibration equipment wich is traceable to International Standards.

Es.: **XSA - E - 1 - E - B35D - T - V - 5**
 Intrinsically safe pressure transmitter, with 4 to 20mA signal output, G 1/4 male pressure connection, DIN43650A solenoid electrical connector, 0...30 bar measurement range, ± 0.15% FSO accuracy, 1msec response time., T5 temperature class (-20...+70°C).

GEFRAN spa reserves the right to make any kind of design or functional modification at any moment without prior notice

GEFRAN spa
 via Sebina, 74
 25050 PROVAGLIO D'ISEO (BS) - ITALIA
 tel. 0309888.1 - fax. 0309839063
 Internet: <http://www.gefran.com>

GEFRAN

cod.DTS_XSA_0307_ENG